

HOME

JOURNAL | 美好家居

LOST *in* WONDERLAND

ESCAPE TO THIS OTHERWORLDLY
RESIDENCE IN ENGLAND AND OTHER STUNNING
LOCALES TO CALL HOME

盡情沉醉於世界各地的唯美家園

HK \$45 / NT \$250



TREASURE TROVE

A sophisticated London abode is elevated with ease and comfort | 精緻的倫敦居所以寫意舒適的格調贏盡注目

BY NIKEY CHENG PHOTOGRAPHY ALEXANDER JAMES





PRIVATE AND PERSONAL
The Singer Suite is accentuated with a sense of personality and warmth, creating a liveable yet luxury abode for modern tastemakers.

專屬閣下
Singer Suite的設計綱領以現代品味家的居住享受為重點，以獨特個人的學和暖意，打造出豪華的宜居天地。



What becomes evident throughout the **Singer Suite of Chelsea Barracks** is a scene celebrating beauty and diversity. Situated on the fifth floor of international property developer Qatari Diar Europe's supreme establishment in Belgravia, the five-bedroom apartment is aptly named after the famous Porsche engineer Norbert Singer, known for his holistic design approach. "We drew inspiration from Singer's principle that 'everything is important' for the design narrative," says Eva Leone, luxury design house, Lawson Robb's studio director. "With that in mind, we curated a meticulous design language around a fictitious couple who are ambitious, successful and established in their respective industries."

Blessed with floor-to-ceiling windows that enjoy an abundance of natural light and unobstructed views of London, the apartment boasts soaring ceilings at 2.8 metres, spacious doorways, flexible storage systems and generous-sized rooms for urban luxury living.

While the residence was naturally elegant and sophisticated in style, it was essential to layer the space with warmth, personality and approachability to streamline aesthetics. "Our brief was to transform a show apartment into a home – a serene getaway that is livable, personal and brings the

在切爾西軍營的**Singer Suite**內，優美格調和多樣化設計瀰漫滿屋。這個5房住所位於國際地產公司Qatari Diar Europe在倫敦Belgravia區一幢奢華建築的5樓，以傑出的保時捷工程師Norbert Singer命名。「我們以Singer的原則『一切皆重要』為設計之本。」豪華室內設計室Lawson Robb的工作室總監Eva Leone表示：「我們以此為念，虛構出一對在各自行業也是成功人士的夫婦，再圍繞這對夫婦創作出一種設計語言。」

居所的落地大窗把大量日光和遼闊的倫敦景色盡收屋內。這兒樓底高達2.8米，還有寬闊的門口、靈活的儲物系統和敞大的房間，打造出豪華的都市生活。

“OUR BRIEF WAS TO TRANSFORM A SHOW
APARTMENT INTO A HOME – A SERENE GETAWAY THAT IS
LIVABLE AND PERSONAL”

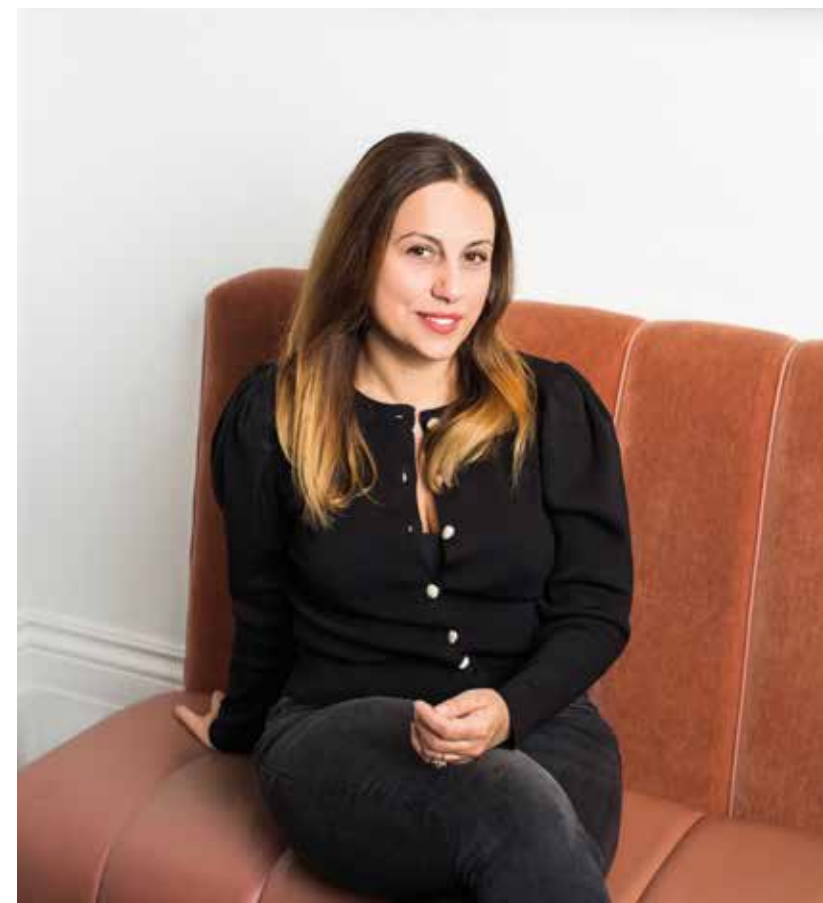


CONTEMPORARY TREASURES

The elegant textures and sumptuous appointments lend understated drama to the residence without being overpowering. Opposite page: Eva Leone, Lawson Robb's studio director

當代魅力

優雅質感與華靡傢具為單位注入了低調耐看的矚目效果。對頁圖為Lawson Robb的工作室總監Eva Leone。



client happiness, privacy and utmost comfort," Eva continues. "I think that the most pleasure will come from knowing that you are living in a space that is just as suited to appear on the pages of a magazine as it is to be lived in with comfort and ease."

The aesthetic discourse is meticulously extended to some of key features of the home: the chandelier in the formal dining area strikes a vivid resemblance of the vertical brass piston in the car engine; the bronze metal insert in the coffee tabletop positioned in the dining and lounge room, meanwhile, is inspired by the fascia that crosses the vehicle's roof.

室內滿載優雅和精緻美感，但設計師亦為空間注入溫暖感、個性和易於親近的簡約美學，豐富其層次感。「我們的設計概念是要把一個示範單位改造成一個真正的家——寧靜的私人天地，能提供生活所需，為屋主們帶來快樂、私隱和極致的舒適感。」Eva續說：「我想，最大的快樂是來自於知道自己生活在一個舒適、寫意，而且足以登上雜誌的優美空間中。」

具有故事性的美學延伸至家中多個焦點元素：正式用餐區的吊燈令人聯想到車輛引擎的黃銅活塞；置於飯廳和休息廳的咖啡桌面鑲有青銅金屬嵌件，靈感來自車頂的儀表板。

“THE MOST PLEASURE WILL COME FROM KNOWING THAT YOU ARE LIVING IN A SPACE THAT IS JUST AS SUITED TO APPEAR ON A MAGAZINE AS IT IS TO BE LIVED IN WITH COMFORT AND EASE”



Enveloping the home throughout is a soothing colour palette composed of petrol blue, burgundy, bronze and wooden accents, complete with exceptional joinery and modern furniture designs. The dining room perhaps best epitomizes the design team’s predilection for exquisite finds. A case in point is the underneath of the hexagonal table, a bespoke rug inlaid with bronze-tinted glass doubles as a surprising art piece for all to appreciate. Forming the heart of the home is an informal, multi-functional kitchen and living space to suit a myriad of social occasions. Standout brands accentuating this beautiful abode include comfortable furnishings from Rubelli, Pierre Frey, Jim Thompson and Altfield, as well as top-notch kitchen appointments from Sub-Zero & Wolf and Gaggenau.

屋內以柔和色調為主，包括油藍和紫紅色調，還有古銅及木元素，再配以優質的細木工和現代傢俱設計。飯廳體現了設計團隊對精製產品的偏愛——六角形桌子下方擺放了一張鑲有青銅色玻璃的訂造地毯，設計非凡，同時成為家中一件令人讚嘆的藝術品。居所的中心由多功能廚房和客廳組成，適合各種社交場合。來自Rubelli、Pierre Frey、Jim Thompson和Altfield的優質傢俱，以及Sub-Zero & Wolf和Gaggenau的頂級廚房設備，共同為居所營造高雅格調。

Qatari Diar Europe是Chealsea Barracks旗下的國際地產商，其銷售總監Miles Wood透露更多有關這個居所的非凡優點：「這個發展

PASSION PROJECT

Comfort was top priority in the design scheme as delicate furnishings were selected as a celebration of craftsmanship and luxurious living, including Giorgetti’s Genius chair and notable lighting fixtures from Lee Broom, Henge and Ochre.

熱情所在

舒適享受是設計項目的首條考慮，多款精緻的傢俱擺設也旨在宏揚工藝技術與奢華生活，如Giorgetti的Genius椅，以及來自Lee Broom、Henge和Ochre的精緻燈具。





Miles Wood, sales director of Qatari Diar Europe, the International Property Developer of Chelsea Barracks, further reveals the impeccable advantages of the residence, “What makes the development unique is the sheer quantity of green space we have provided to the public – 40% of the site will be garden squares for which the public can walk through freely.” Ultimately, this is a cohesive, functional space that fosters connections and promotes transformative dialogues, successfully brought to life for the many happy occasions of life. //

項目最特別之處，是我們為公眾提供了大量的綠色空間——工程中約有40%的用地是花園廣場，可供人們輕鬆漫步。」一個具有凝聚力和多功能的空間，能促進人與人的交流，為生活製造更多快樂的時刻。//

SLEEP TIGHT

Highlighted by streamlined aesthetics, the bedrooms are relatively muted and serene than the rest of the home, forming a genuine refuge for the homeowners to unwind.

完美入睡

睡房的設計相比起其他生活空間，更顯素靜俐落，以霧面色系營造宜人的休閒空間，讓屋主每晚能享優質睡眠。

